



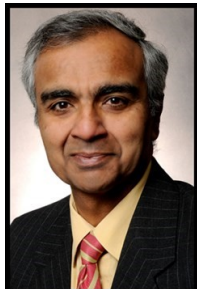
**DIVISION OF AGRICULTURE**  
**RESEARCH & EXTENSION**  
*University of Arkansas System*

## Department of Biological and Agricultural Engineering



**UNIVERSITY OF  
ARKANSAS**  
COLLEGE OF  
ENGINEERING

### Fall 2018– E-Newsletter



[Click here for a letter from the desk of our Department Head](#)

### Faculty Spotlight



#### **Dr. Liang awarded the 2018 Educational Aids Blue Ribbon**

Congratulations To Dr. Liang for receiving the 2018 ASABE Educational Aids Blue Ribbon. She was presented the award at the annual ASABE international meeting this July, in Detroit, Michigan. To learn more about her and T. Tablers research, click [here](#)



#### **Dr. Saddaka receives Outstanding Engineer Award**

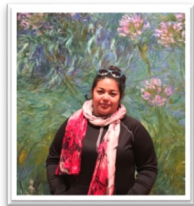
Congratulations To Dr. Saddaka for receiving the 2018 ASABE Outstanding Engineer award at the ASABE State Section meeting this October.



#### **Dr. Runkle and team recognized as oSTEM Rookie Chapter of the Year.**

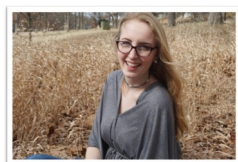
Dr. Runkle and 9 students traveled to Houston, Texas this November to receive the oSTEM 2018 Rookie Chapter of the Year Award. To learn more about this, [click here](#) to visit the oSTEM Facebook page

## Student Spotlight



### America Sotero won 1st place at University of Arkansas Three Minute Thesis Competition

For more information about the university– wide final, click [here](#)



### Laura Grey awarded Outstanding Senior

Congratulations to Laura Gray on receiving the Outstanding Senior Award at the 2018 ASABE State Section meeting this October.

---

## In the News



### Building Resilience and Long-Term Sustainability in our Society

Dr. Runkle was a guest on Fayetteville Folkus to talk about his work in eastern Arkansas.

[Click here to hear the recording.](#)

---

## Follow Us on Social Media!



[University of Arkansas: Department of Biological & Agricultural Engineering](#)



[Bio-Agri Engineer @UarkBENG](#)



[Bio-Agri Engineer @UarkBENG](#)

---

From ours, to yours, we would like to wish you a happy holiday. If you would like to make a scholarship donation [Click Here](#) for the form.